



Middle School Classroom Furniture

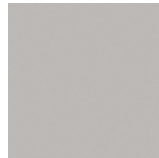
*Note: All pictures are for illustration purposes only, actual furniture may vary. Prices subject to change. Typical lead time on furniture: 8-12 weeks
(Revised 12/16/2025)*

Aperture Shape Desk



Video demo of different ways the desk can be set up:

<https://vimeo.com/92789102>



Fashion Grey #D381 Laminate

Student Desk, Aperture Shape, 24" x 40", (adjustable height 25" - 38" for sitting or standing),
Laminate Color: Fashion Grey, High Gloss Dry Erase Surface with Black Band Edge
Includes Casters on 2 of the Legs

Recommended Settings:

Grade	Sitting Height	Standing Height
6th-8th grade:	29" H	36" H

Vendor: Concepts / Mfr. C&H Equip. Part #: CH-AP2440P, \$393.75 each

Triangle Shape Desk



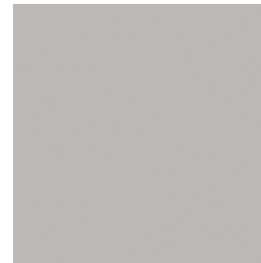
Student Desk, Triangle Shape, 28" x 28" x 36", (adjustable height 28" - 42" for sitting or standing),
Hard plastic surface color: Gray
Includes Caster on Center Leg

Recommended Settings:

Grade	Sitting Height	Standing Height
6th-8th grade:	29" H	36" H

Vendor: Concepts /Mfr. C&H Equip. Part #: CH-TR282836P, \$271.25 each

Square Table



Fashion Grey #D381-01

Activity Table, Square Shape, 48" w x 48" L , (adjustable height 24"-32"H),
Laminate Color: Fashion Grey, High Gloss Dry Erase Surface with Black Band Edge

Recommended Settings:

Grade	Sitting Height
-------	----------------

6th-8th grade:	29" H
----------------	-------

Vendor: Virco / Mfr. Virco Part #: X504848ADJCHRM, \$448.96 each

Café Height Table



Fashion Grey #D381-01 Laminate

Café Height Table, Round Shape, 42" diameter, 41" high (fixed height)

Vendor: Virco Inc.

Part #: (Top) X-U42RDE / (Base) 6613341CHRM, \$689.49 each

Flip & Nest Table



Flip & Nest Table, Rectangle Shape, 30"W x 60"L, (Fixed Height)

Laminate: Markerboard White D514-9, High Gloss Dry Erase Surface with Black Band Edge

Grade	Sitting Height
6th-8th grade:	29" H

Vendor: Office & Ergonomic Solutions

Part #: (Base) HON HMBFLIP30L--C-\$(P2)--PR6; (Top) HMT3060E--N-\$(L5PTR)--WLX9-.P, \$654.74 each

Science Table

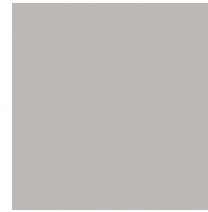


For Science rooms

Science Table, Rectangle Shape, 24"W x 54"L x 30"H (fixed height),
High Pressure heat/chemical resistant laminate Top, Solid Wood Legs, Rubber Leg Boots

Vendor: Office & Ergonomic Solutions / Part #: National Public Seating SLT2454, \$383.98

Half Moon Table



Fashion Grey #D381-01 Laminate

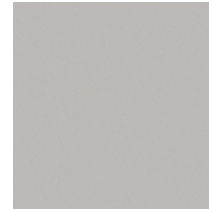
Activity Table, Half Moon shape, 36"W x 72"L, (adjustable height 22"-30"H),
Laminate Color: Fashion Grey, High Gloss Dry Erase Surface with Black Band Edge

Recommended Settings:

Grade	Sitting Height
6th-8th grade:	29" H

Vendor: Virco / Mfr. Virco Part #: X48COOP72DECHRM, \$529.60 each

Nest Table



Fashion Grey #D381-01 Laminate

Activity Table, Nest shape, 30"W x 54"L, (adjustable height 22"-30"H) , Dry Erase Surface with black band edge, (2 placed together make a round table)

Laminate Color: Fashion Grey, High Gloss Dry Erase Surface with Black Band Edge

Recommended to be set at the following heights:

	<u>For sitting</u>
6 th -8 th grade:	29" H

Vendor: Virco / Mfr. Virco Part #: X48NEST54DECHRM, \$263.68 each

Presentation Table



Fashion Grey #D381-01 Laminate

Presentation Table, Rectangle Shape, 24"W x 48"L , (adjustable height 30"– 39")
Laminate Color: Fashion Grey, High Gloss Dry Erase Surface with Black Band Edge

Recommended Settings:

Grade	Sitting Height	Standing Height
6 th -8 th grade:	29" H	36" H

Vendor: Virco / Mfr. Virco Part #: X502448ADJSU, \$339.52 each

Student Chairs



Student Chair, Ergonomic, Specify Color from options shown above. (actual color may vary)

Recommended Sizes:

Grade	Height	Part #	Price:
6th-8th grade:	18" H	Artcobell D10A	\$49.89

Vendor: Office & Ergonomic Solutions

Stool with Back

For use with 41" High Café Tables



Student Stool, Ergonomic, Specify Color from options shown above. (actual color may vary)

Recommended Height:

Grade	Height	Part #	Price
6th-8th grade:	30" H	Artcobell AS4ST30	\$124.14

Vendor: Office & Ergonomic Solutions

Backless Stools



Stool, backless, adjustable height (19"-27"), chrome legs. Specify Seat Color from options shown above (Colors may vary)

These are for use as an option to sit at standing height aperture or triangle desks.

Grade	Height	Price
6th-8th grade:	27"	\$109.34

Vendor: Office & Ergonomic Solutions

SOFT SEATING



● Slate Gray



● Midnight Blue



● Autumn Orange

Vendor: Lakeshore Learning

Modern Edge Modular Chair, 34"H x 24"W x 27" (seat height 18"), Mfr Part #: LC780, \$563.06

These seats must be arranged for individual seating only and cannot be combined to form seating for more than one individual.

Wobble Stools



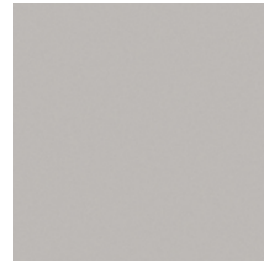
Stool, Active Learning, Specify Size from options shown below and Color from options shown above
(Blue, Red, Green, Black or Navy)

Recommended Height:

<u>Grade</u>	<u>Height</u>	<u>Part Number</u>	<u>Price</u>
6 th -8 th Grade	20" High x 13" seat diameter	#LNT-3046-20	\$87.50

Vendor: School Outfitters

Mobile Teacher Desk



Color: Fashion Grey #D381-01

Teacher Desk, peninsula-shape with removable podium, 30" w x 72" L x 29" H,
2 locking file drawers, center pencil drawer, black metal frame with locking casters
Laminate Color: Fashion Grey, High Gloss Dry Erase Surface with Black Band Edge

**Vendor: Concepts School & Office Furnishings, Mfr C&H Equipment Part
#CHSP3072P-CD, \$875.00 each**

Teacher Ergonomic Chair



Ergonomic Task Chair, Mesh back with upholstered seat

- **Chair with Arms**
- **Fabric Color: #2570 Graphene**

Vendor: Business Office Outfitters / Part #: Office Master YS72/KR-200, \$360.37 each

Teacher Chair for Small Groups



Onyx

Adult Chair (18" Chair with Casters), Color: Onyx
For use with small groups at activity tables

Vendor: Office & Ergonomic Solutions / Part #: Artcobell D16A, 18", \$83.30 each

Outdoor Tables



Octagon Shape Outdoor Table, 46" Top,
Seats 8



Rectangle Shape Outdoor Table, 8 ft. long,
Seats 10-12

Can be used outside the classroom(s) for outdoor learning if space is available, may also be used in lunch area(s).

Black Frame, Specify Color for Top and Benches:



RED



BLUE



BLACK



GREEN



YELLOW



PURPLE

Vendor: Dave Bang Associates

Octagon Part #: Wabash Valley SG145D, \$1,737.00 each

Rectangle Part #: Wabash Valley SG111D, \$1,570.00 each

Umbrellas

For use with 46" Octagon Tables
2-piece pole, manual lift, marine grade fabric standard colors



STANDARD LINE | CANOPY COLORS



Dandelion



Antique Beige



Black



Pacific Blue



Forest Green



China Red



Natural White



Burgundy



Cardinal Red



Classic Royal Blue



Captains Navy



Terra

MARKET & ONE PIECE
POLE FINISHES



White



Champagne
Bronze

Vendor: Dave Bang Associates

7' Diameter Part #: Wabash Valley UM105, \$725.00 each

9' Diameter Part #: Wabash Valley UM110, \$829.00 each

Storage for New Relocatable Classrooms

District standard is two of each piece (Straight Shelf, Tall Locking Cabinet and Cubby), additional pieces may be purchased with site funds

SUPER SIZED MOBILE STRAIGHT SHELF, WITH 2 ADJUSTABLE SHELVES



Product Dimensions: 35.50" H x 48" W x 15" D
Color: Gray/Blue Edge Banding

Vendor: School Specialty / Part #: Jonti-Craft 26932JCWW112 \$556.11 each

STORAGE CABINET, TALL, LOCKING, WITH 2 ADJUSTABLE SHELVES



Product Dimensions: 72" H x 36" W x 24" D
Color: Gray/Blue Edge Banding

Vendor: Office & Ergonomic Solutions Inc. / Part #: Jonti-Craft 5950JC112 \$1,205.89 each

Mobile Cubby Unit, Including 20 Cubby Trays



Product Dimensions: 29.50" H x 60" W x 15" D
Color: Gray/Blue Edge Banding



Vendor: Office & Ergonomic Solutions Inc. / Part #: Jonti-Craft 0421JCWW000 \$793.79 each

Miscellaneous

CABINET, file, steel, 25" depth, premium quality with locks, hanging file folder frame, Letter, 4 drawer, 25"

Available Colors: Black, Gray or Putty

Part #: HON 514P, \$366.58

Vendor: Office & Ergonomic Solutions



CABINET, file, steel, 25" depth, premium quality with locks, hanging file folder frame, Letter, 2 drawer, 25"

Available Colors: Black, Gray or Putty

Part #: HON 512P, \$271.94

Vendor: Office & Ergonomic Solutions



CABINET, File, 36"W x 18"D x 28"H, 2 drawer lateral with lock and suspension drawers, including hanging file folder racks

Available Colors: Black, Gray or Putty

Part #: HON 682L, \$457.92

Vendor: Office & Ergonomic Solutions



CABINET, File, 36"W x 18"D x 39.125"H, 3 drawer lateral with lock and suspension drawers, including hanging file folder racks

Available Colors: Black, Gray or Putty

Part #: HON 683L, \$638.29

Vendor: Office & Ergonomic Solutions



CABINET, File, 36"W x 18"D x 52.5"H, 4 drawer lateral with lock and suspension drawers, including hanging file folder racks

Available Colors: Black, Gray or Putty

Part #: HON 684L, \$791.71

Vendor: Office & Ergonomic Solutions



CABINET, File, 42"W x 18"x 28"H, D 2 drawer Lateral with lock and suspension drawers, including hanging file folder racks, front to back rails

Available Colors: Black, Gray or Putty

Part #: HON 792L, \$670.97

Vendor: Office & Ergonomic Solutions



CABINET, storage, metal, adjustable, shelves with lock.

Available Colors: Light Gray or Black

- 36W x 60H x 18D, Part #: C&H SC2, \$448.75
- 36W x 72H x 18D, Part #: C&H SC3, \$474.35
- 36W x 72H x 24D, Part #: C&H SC4, \$507.28
- 36W x 78H x 18D, Part #: C&H SC5, \$527.55

Vendor: Concepts School and Office Furnishings



BOOKCASE, metal

Available Colors: Light Gray or Black

- 29"Hx36"Wx12"D:
1 Adjustable Shelf, 32 lbs.
Part# SB1A, \$137.50
- 42"Hx36"Wx12"D, 2 Adj. Shelves, 43 lbs.
Part # SB3A, \$163.75

Vendor: Concepts School and Office Furnishings



Please contact Dawn in Purchasing for additional needs, sizes, questions or to schedule a space assessment;
vegad@cajonvalley.net or (619)588-3001

